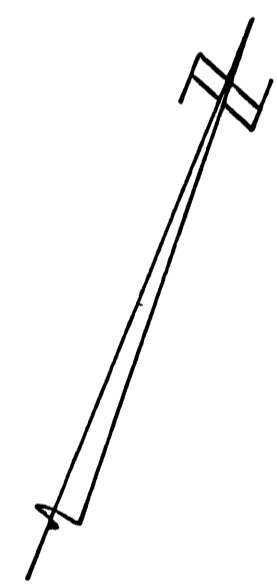
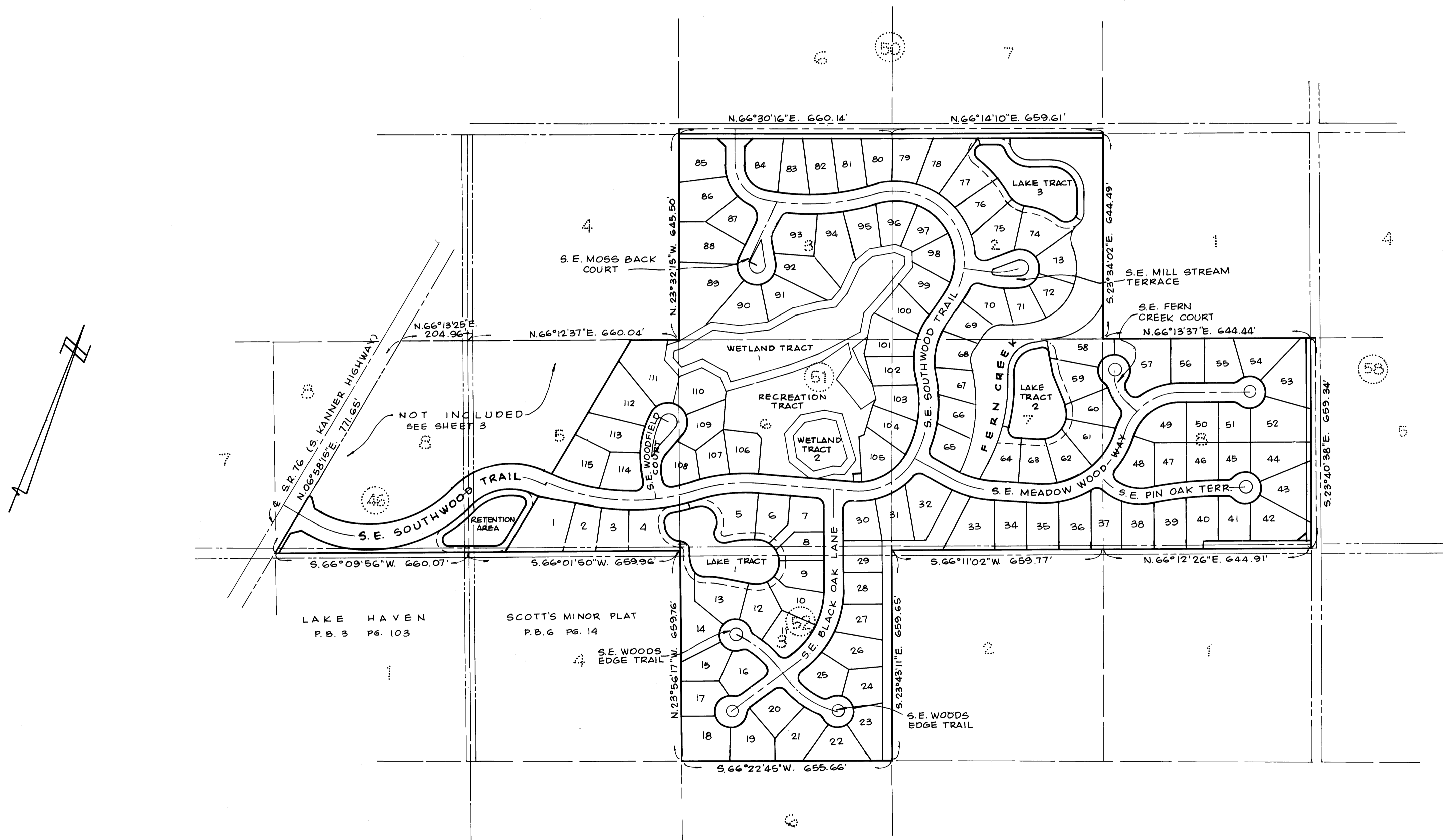


**PLAT OF
SOUTHWOOD**
A PLANNED UNIT DEVELOPMENT
BEING A REPLAT OF LOTS 2,3,6,7, & 8, BLOCK 51, LOT 3, BLOCK 52, AND A PORTION OF LOT 5, BLOCK 51, AND A PORTION OF LOT 8, BLOCK 46,
PLAT OF SAINT LUCIE INLET FARMS, PLAT BOOK I, PAGE 98, PUBLIC RECORDS OF MARTIN COUNTY, FLORIDA
HANSON GRANT, MARTIN COUNTY, FLORIDA

Plat Book 12
Page 28



ADAIR & BRADY, INC. CONSULTING ENGINEERS & LAND SURVEYORS STUART, FL			SOUTHWOOD, A P.U.D. Record Plat	
Dr. am	F.B.		Scale	1"=200'
Ck. GW	P.G.	Date	SEPT. 89	
Ap. dp		Job No.	87520	
			FP 5-077	SHEET 2 OF 7